


ICS Form 201

EVENT BRIEFING	1. Event Name: District 14 ARES® SIMPLEX NET	2. Date Prepared 21 April 2015	3. Time Prepared 11:00Local
4. Map Sketch			
<p>District 14 ARES® SIMPLEX Net 2000 Local, Wednesday 29 April 2015</p>  <p>The logo is circular with a red border. Inside the border, the words "AMATEUR RADIO" are written in blue at the top and "EMERGENCY SERVICE" at the bottom. In the center is a blue diamond shape containing a white circuit diagram with the letters A, R, R, and L. Two red lightning bolts are positioned on either side of the diamond.</p>			
ICS 201 Page 1 of 4	5. Prepared by (Name and Position) Kerry N Mallory AE5JY, STX District 14 SW Unit EC		

Goals and Objectives for 29 April 2015 WAN

1. Identify resources available for use by District 14 ARES Units that are capable of providing effective county-wide and beyond communications.
2. Promote greater association to strengthen the spirit of cooperation between all four District 14 ARES Units, adjacent counties and counties within the reach of N5TRS tower coverage. All ECs are encouraged to aggressively promote the participation of as many members and non-members as possible.
3. Use ICS templates for planning, execution and documentation as directed by the District 14 ARES Plan.

Simplex NET Operational Information

The Simplex Net will begin at 2000 Local. The main objective is to test the ability to communicate district wide on Simplex, in the event local repeaters are down during an incident.

The Net will be performed on the County wide FM Simplex Frequency 145.700.

ARES Officers will be called to check in First. Following, Served Agencies will be called to check in. General Membership will be called next.

Served Agencies will be asked to provide the following information upon checking in and being recognized. This will allow operators at Served Agencies to secure their location in a timely manner.

Antenna Height (approx if not known)
Power out put.

All stations are asked to remain on the NET, after checking in for Net control to call as second time , to get following information.

QTH or Mobile
Antenna Height
Power out put

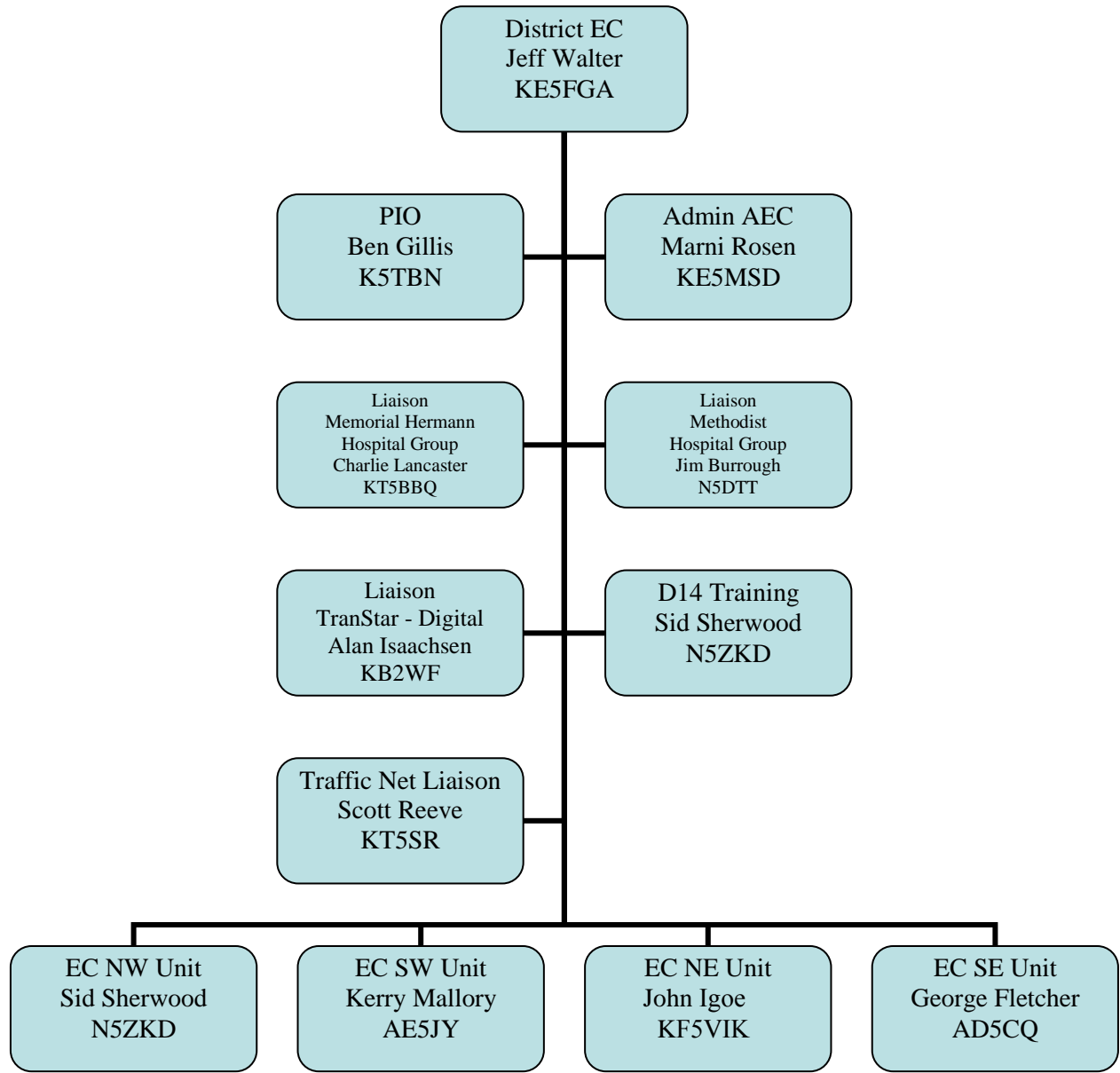
6. Summary of Current Actions

1. Unit ECs are requested to announce the Simplex NET on their regular Unit NETS and request all members to participate. Additionally, other means of announcement, such as phone trees, email lists or other means are strongly encouraged.
2. All in Harris County Database have been sent a copy of EAP.

SAFETY

Safety is paramount. Always think safety on all ARES operations. Be conscious of the conditions around you on all deployments. Be aware of your situation and surroundings at home and while deployed. If deployed to a hazardous location use the buddy system and make certain that someone knows where you are.

7. 29 April 2015 District 14 Organizational Chart



EVENT RADIO COMMUNICATIONS PLAN		1. Event Name District 14 ARES Simplex Net	2. Date/Time Prepared 21 April 2015 11:00 local	3. Operational Period Date/Time 29 April 2015 1940 - 2100 Local	
4. Basic Radio Channel Utilization					
Net Control Operator Back Up Operator	Band Net	Function	Frequency/Tone	Assignment Location	Remarks
Kerry N Mallory AE5JY	2m Simplex	1 st NC 2 nd NC	145.700 no tone	Transtar	Transtar
5. Prepared by (Communications Unit) Kerry N Mallory AE5JY, STX District 14 SW Unit EC					

Event Communications Plan, ICS Form 205

GENERAL MESSAGE		
TO:	POSITION: Served Agency Radio Operators	
FROM: Kerry N Mallory AE5JY	POSITION: ARRL STX District 14 SW Unit EC	
SUBJECT: Call for net operations	DATE: 29-April-2015	TIME: 19:30 local
MESSAGE:		
<p>Regarding the upcoming County Simplex Net 29 April 2015:</p> <ul style="list-style-type: none"> • Please be on station ready to operate at 19:45 local. Monitor 145.700 for instructions. • I will call the countywide Simplex Net 145.700 to announce the net at that time. • I will call ARES officers at the beginning of the net. • I will then call for Served Agencies. After checking in and being recognized, please proceed to give information on equipment being used at your Agency. • General membership will be called next on the Net. After all check-ins , Net Control will return to individual stations for information on equipment being used. • I will start the net promptly at 8 PM and keep the net open until all check-ins have been taken. We will close the net by 9:00 PM if no other check-ins are waiting. 		
SIGNATURE:	Kerry N Mallory	POSITION: County Wide FM Simplex Net IC
REPLY:		
DATE:	TIME:	SIGNATURE/POSITION:

ICS Form 213

