

ICS Form 201

INCIDENT BRIEFING	1. Incident Name: District 14 ARES® Wide AREA NET (WAN)	2. Date Prepared 26 Aug 2009	3. Time Prepared 1344 CDT
	4. Map Sketch		

District 14 ARES® Wide Area Net
1900 Local, Sunday, 30 August 2009



ICS 201 Page 1 of 4	5. Prepared by (Name and Position) Jeff Walter KE5FGA, STX District 14 EC
------------------------	---

6. Summary of Current Actions

Goals and Objectives for 30 August 2009 WAN

Goals

1. Conduct an efficient District 14 ARES WAN on the last Sunday of each month that has five Sundays.
2. Promote greater association to strengthen the spirit of cooperation between all four District 14 ARES Units, adjacent counties and counties within the reach of local repeater coverage zones. All ECs are encouraged to aggressively promote the participation of as many of their members as possible.
3. Use ICS templates for planning, execution and documentation as directed by the District 14 ARES Plan.

Objectives

1. Identify repeaters available for use by District 14 ARES Units that are capable of providing effective countywide and beyond communications.
2. Conduct an efficient and effective WAN including as many ARES and non-Ares members from all participating jurisdictions as possible.
3. Implement a notification process for other STX District ARES members and non members to participate.
4. Evaluate the Net for overall efficiency and response from all participating jurisdictions.
5. Demonstrate the use of ICS documents as a planning, execution and documentation tools for ARES events as directed by the District 14 ARES Plan.

30 August WAN Operational Information

The WAN will begin at 1900 CDT. You may check in to as many nets as possible.

Please review the WAN script on page 8 prior to the WAN in order to have a clear understanding of the sequence and how the WAN will operate.

ICS 201

Page 2

Jeff Walter KE5FGA, STX District 14 EC

6. Summary of Current Actions

1. Unit ECs are requested to announce the WAN on their regular Unit NETS and request all members to participate. Additionally, other means of announcement, such as phone trees, email lists or other means are strongly encouraged.
2. All net control and back up net control stations will be identified before the initial WAN ICS documentation is released to the unit members. All net control and backup net controls are requested to perform net control duty for a local net prior to the WAN.
3. All repeaters trustees have been notified and permission received for use.
4. HCOEM has been notified of our intent to use the TranStar Radio Room facilities.

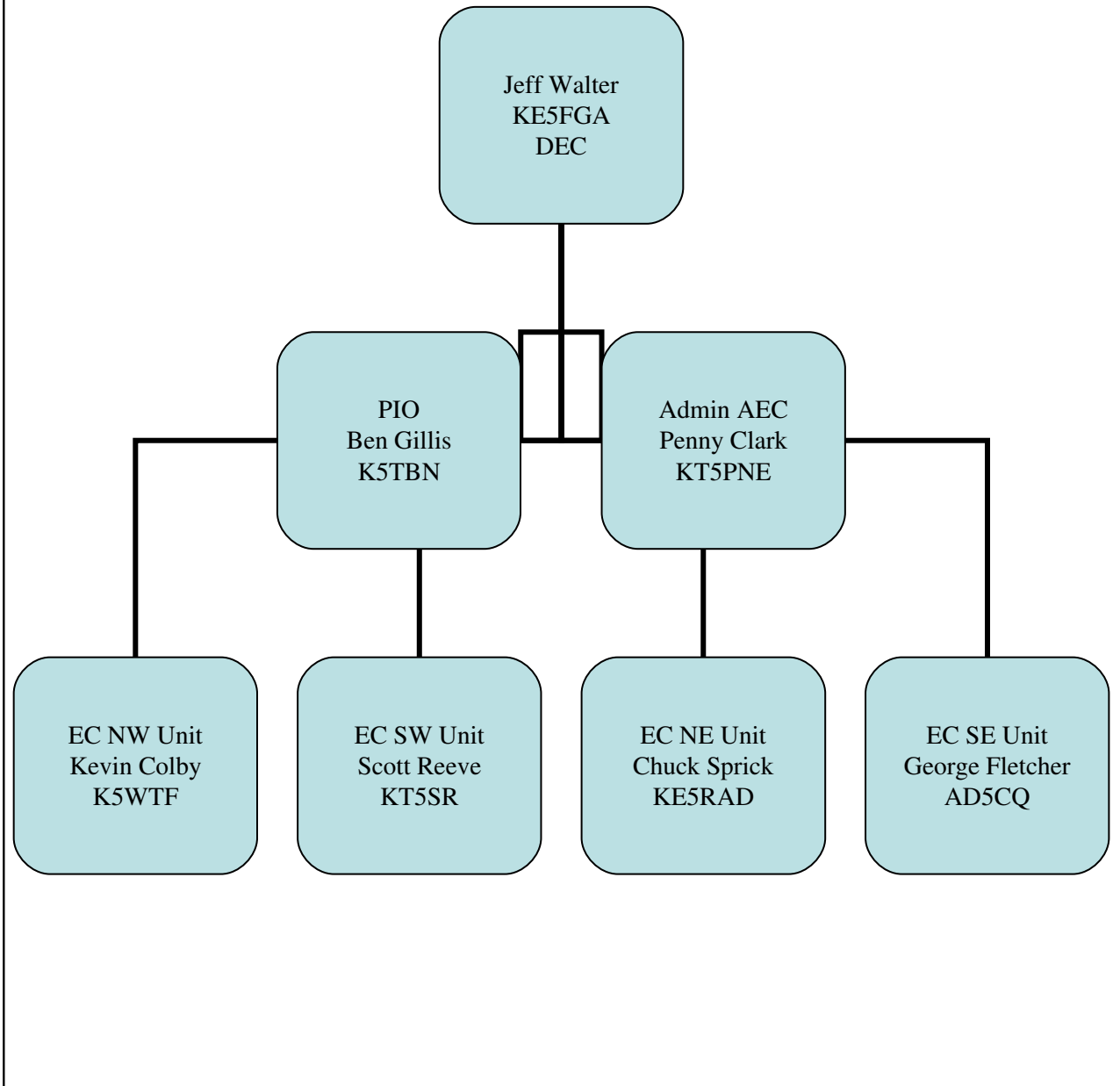
SAFETY

Safety is paramount. Always think safety on all ARES operations. Be conscious of the conditions around you on all deployments. Be aware of your situation and surroundings at home and while deployed. If deployed to a hazardous location use the buddy system and make certain that someone knows where you are.

ICS 201

Page 3. Prepared by (Communications Unit)
Jeff Walter KE5FGA, STX District 14 EC

7. 30 August 2009 District 14 Organizational Chart



ICS 201

Page 4. Prepared by (Communications Unit)
Jeff Walter KE5FGA, STX District 14 EC

8. Resources Summary				
Resources Ordered	Resource Identification	ETA	On Scene	Location/Assignment
147.000 (+) 103.5	County Information Net Trustee W5TXV contacted and use authorized.	1830		Houston, TX
146.980 (-) 103.5	East Net Primary repeater Chambers, Jefferson, Liberty, Hardin, Harris, Orange, Polk, San Jacinto, Tyler Counties, Calcasieu Parish LA Trustee KA5QDG contacted and use authorized.	1830		Devers, TX
146.880 (-) 103.5	East Net back up repeater Trustee N5VCX contacted and use authorized.	1830		Houston, TX
145.170 (-) 123.0	HESG Net primary repeater Trustee KA5QDG contacted and use authorized.	1830		Houston, TX
444.600 (+) 71.9	HESG Net back up repeater Trustee N5VCX contacted and use authorized	1830		Houston, TX
145.110 (-) 123.0	South Net primary repeater Brazoria, Galveston, Matagorda and Wharton County Trustee KA5QDG contacted and use authorized.	1830		Alvin, TX
146.940 (-) 167.9	South Net back up repeater Brazoria, Galveston, Matagorda and Wharton County Trustee Pump WA5CYI contacted and use authorized.	1830		Missouri City, TX
145.410 (-) 100.0	West Net primary repeater Austin, Colorado, Fayette, Ft. Bend, Washington Counties Trustee W5AOV contacted and use authorized	1830		Cat Spring, TX
444.075 (+) 103.5	West Net back up repeater Austin, Colorado, Fayette, Ft. Bend, Washington Counties Trustee N5ZUA contacted and use authorized	1830		Katy, TX
147.180 (+) 136.5	North Net primary repeater Montgomery, Grimes, Waller and Walker County areas Trustee N5KWN contacted and use authorized	1830		Montgomery County, TX
442.525 (+) 127.3	North Net back up repeater Montgomery, Grimes, Waller and Walker County areas Trustee W5DCW contacted and use authorized	1830		Montgomery County, TX
146.660 (-) 141.3	Central Net primary repeater Harris County area Trustee KA5AKG contacted and use authorized	1830		Houston, TX
146.920 (-) 103.5	Central Net back up repeater Harris County area Trustee WB5UGT contacted and use authorized	1830		Houston, TX
N5TRS@ winlink.org	Digital check ins via Packet with .rtf only ICS-213 attachment.	1830		Houston, TX
4 full headsets with boom microphones		1830		Transtar Houston, TX
ICS 201	Page 5 Prepared by (Communications Unit) Jeff Walter KE5FGA, STX District 14 EC			

INCIDENT RADIO COMMUNICATIONS PLAN				1. Incident Name District 14 ARES WAN	2. Date/Time Prepared 26 Aug 2009	3. Operational Period Date/Time 30 August 2009 1830 - 2000 Local
4. Basic Radio Channel Utilization						
Net Control Operator	Band	Function	Frequency/Tone	Assignment		Remarks
Preston Nichols N5PHN George Fletcher AD5CQ	2m	East Net	146.980 (-) 103.5	Pasadena EOC W5PAS SE Houston		
Chris Haas W5OIL Del Partridge W5QQ	2m 70cm	HESG	145.170 (-) 123.0 444.600 (+) 71.9	Katy Memorial Hermann Hospital Cristus St Catherine Hospital		
Mark Williams WT5MW Ben Gillis N5TBN	2m	South Net	145.110 (-) 123.0	Houston TranStar N5TRS W Houston		
Sid Sherwood N5ZKD Sharon Heivilin KC8EO	2m	West Net	145.410 (-) 100.0	W Houston W Houston		
Bill Rimmer N5LYG Terry Myers KQ5U	2m 70cm	North Net	147.180 (+) 136.5 442.525 (+) 127.3	Houston TranStar N5TRS N Houston		
Peyton Barnes KE5ZDZ Paul Owen N5NXS	2m	Central Net	146.660 (-) 141.3	Houston TranStar N5TRS N Houston		
Bill Stietenroth K5ZTY		Alternate NC		N Houston		
Jeff Walter KE5FGA	2m	IC	147.000 (+) 103.5	Houston TranStar N5TRS		
5. Prepared by (Communications Unit) Jeff Walter KE5FGA STX District 14 EC						

Incident Communications Plan, ICS Form 205

GENERAL MESSAGE		
TO: N5PHN, AD5CQ, W5OIL, W5QQ, WT5MW, K5TBN, N5LYG, KQ5U KE5ZDZ, N5NXS, K5ZTY		POSITION: Net Control Stations
FROM: Jeff Walter KE5FGA		POSITION: ARRL STX District 14 EC
SUBJECT: Call for net operations	DATE: 26-AUG-2009	TIME: 1349 local
MESSAGE:		
<p>Regarding the upcoming wide area net of 30-Aug-2009:</p> <ul style="list-style-type: none"> • Please be on station ready to operate at 18:35 local. Monitor 147.000 for instructions. • I will call the countywide repeater 147.000 to announce the nets and their frequencies at that time. • I will call all stations in to service starting at 18:40 in order as listed on the Incident Communications Plan, ICS Form 205 located on page 6 of this IAP. • At 10 and 5 minutes before the hour all net control stations should call to announce your net, on your assigned repeater, requesting a clear frequency. NC and BUNC should be in contact with each other. • Then all NC stations should call N5TRS on 147.000 to confirm your repeater and net control station is up or other status before starting, then again after for securing your net. • Start your net promptly at 7 PM. Keep the net open until all check-ins have been taken. Close the net at 8 PM if no other check-ins are waiting. Dual nets should end the first net @ 7:30 and the second net @ 8:00. 		
SIGNATURE: <p style="text-align: center;">Jeffery A Walter</p>		POSITION: <p style="text-align: center;">Wide Area Net IC</p>
REPLY:		
DATE:	TIME:	SIGNATURE/POSITION:

ICS Form 213

District 14 ARES® Wide Area Net

(Revised 14 August 2009)

NET PREAMBLE TEMPLATE

CQ.....CQ.....CQ.....

This is <KE5FGA> **Kilo Echo 5 Foxtrot Golf Alpha**, primary net control station for tonight's net. My name is Jeff, located in Harris County, near HWY 249-Louetta. Is tonight's backup net control station on frequency and what is your location?

Tonight, we are using the 146.980 repeater, with the permission of the repeater trustee KA5QDG. This repeater requires a sub-audible tone of 103.5 Hertz for access, with a negative offset. If your transmitter does not have this tone, please transmit simplex on the repeater output frequency.

This net is open to all amateurs in the surrounding community. This net is not limited to ARES members. ARES, CERT, MARS, RACES, REACT, no affiliation, Where ever you may be located within the sound of my voice, all are welcome and encouraged to check in.

For information on becoming an ARES member, please contact the EC for your local county unit. Please send radio packet check-ins to N5TRS@Winlink.org using ICS-213 form as a Rich Text Format (.rtf) attachment. Actual use of this form is page 7 of this plan. Saving in any other format will make the document too large (.doc) or destroy the form itself (.txt)

This is a directed net; all stations are requested to remain on frequency until recognized and location identified by net control. You are encouraged to check into as many nets as possible. Please refer to page 5 of the IAP for a listing of all nets. The first objective of these nets is to identify repeaters available for use by District 14 ARES Units that are capable of providing effective countywide and beyond communications.

Please be prepared to report on your location.

If you are located at a served agency, please state the agency name. Please indicate if you are mobile. Just sitting in your car does not constitute mobile. You should be moving. In all cases, name the city and county that you are calling from.

- When requesting check-ins to the net acknowledge the call signs you hear before asking for more stations.
- Call each station that checked in with traffic, in the order they checked in, asking each one: Their name and location.

- Record their information on the Unit Log (Page 10 of the IAP)
- Make at least two calls for each group, late check in will be picked up later.
- When completed with the initial list of check-ins, request if there are any relays for the wide area net.

Begin Net Check-In Process

Do we have any stations that wish to check in that have priority or emergency traffic for the net? Please call now using ITU phonetics.

We will now take check-ins from stations with call sign suffixes beginning: A-Alpha through L-Lima

Acknowledge the call signs you hear before asking for more stations, ask for any relays. Continue with the next group when no one answers

M-Mike through Z-Zulu

Acknowledge the call signs you hear before asking for more stations, ask for any relays. Continue with the next group when no one answers

We will now take additional check-ins from stations with all call sign suffixes beginning: A-Alpha through Z-Zulu

Acknowledge the call signs you hear before asking for more stations, continue when no one answers

Call each station in the order they checked in, asking each one:

Their name and location, Excuse each station once their report is received. They may stay on frequency if they wish, but are not required to.

Continue calling for additional check-ins and recording their information until the net closes at 8:00 pm local time.

Is there any further business for tonight's net?

This is **KE5FGA** now closing the Wide Area **North** Net. We want to thank the **HAMS** repeater club, Trustee **KA5QDG**, and the other users of this frequency for giving us a clear frequency to conduct this net. This repeater and frequency are now available for normal amateur operations.

This is **KE5FGA** clear.

Compile list and NCS and Backup NCS should compare and confirm information.

Number of check-ins: _____

Total time of the net: _____

Pieces traffic passed: _____

Documented information for every check in:

Name/Call

City - County location they are located at.

Send The Unit Log (ICS-214) to Penny Clark KT5PNE and copy to Jeff Walter KE5FGA before securing site.

UNIT LOG ICS-214		1. Incident Name Wide Area Net	2. Date Prepared 30-Aug-2009	3. Time Prepared 2000 Local
4. Unit Name/Designators North Net		5. Unit Leader (Name and Position) Jeff Walter KE5FGA - ARRL STX 14 EC		6. Operational Period 1830-2000
7. Personnel Roster Check ins				
Call	Name	City	(Home Base)	County
8. Activity Log				
Time	Major Events			
	Begin operations			
	Secure operations			
9. Prepared by (Name and Position)				